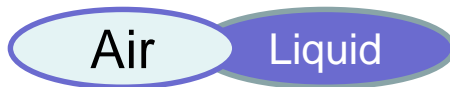




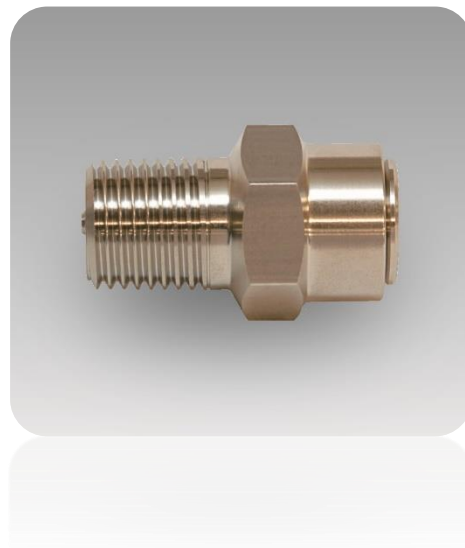
“FRA” series

Low pressure atmospheric open model.



■ Features

- High precision cracking performance ,high sealability.
- Small and light design is ideal for fluid that exhaust to outside.
- Various port sizes.
- Cracking pressure’s setting is done before delivering.



■ Applications

- Machine Tools : Milling machine, NC lathe, laser processing machine etc.
- Industrial furnace : General industrial furnace, heating furnace, vacuum furnace, etc.
- Medical : Endoscope washing device, oxygen concentrator, anesthesia machine etc.
- Analysis equipment: Measurement equipment, component gas analysis, gas analyzer etc.
- Battery : Household fuel cell, secondary battery, gas engine etc.
- Water (liquid) treatment: Pure water production, pure water recycling.
- Gas generator related: Compressor, compact pressure vessel, various gas generator etc.
- Others: Oxygen capsule, gasoline measuring instrument, forklift etc.

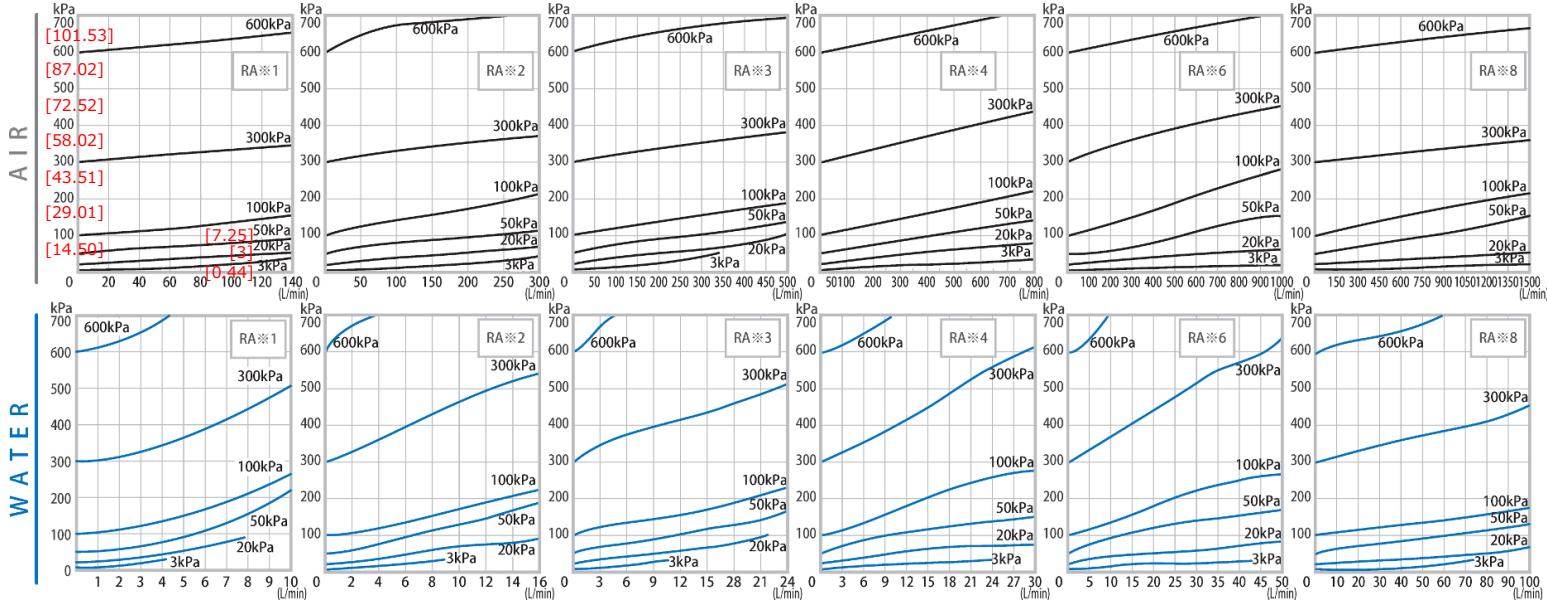
■ Specification

Pressure resistance MPa [psi]	1.62 [234.96]	Operating temperature range °C[°F]	Pursuant to seal material
Pipe port	R1/8~R1	Cracking pressure kPa [psi]	3~1080 [0.44 ~156.64] ※Port size 1/8’s pressure range is 3~970kPa [0.44~140.69psi] ※Pressure range 3~29kPa [0.44~4.21psi] is option order.
Body material	Brass / SUS316		
Seal material	FKM(standard)		
Comment	<ul style="list-style-type: none"> ■ Brass bodies are nickel plating. ■ In case of setting pressure is under 5kPa [0.73psi], pipe port is turned up. 		

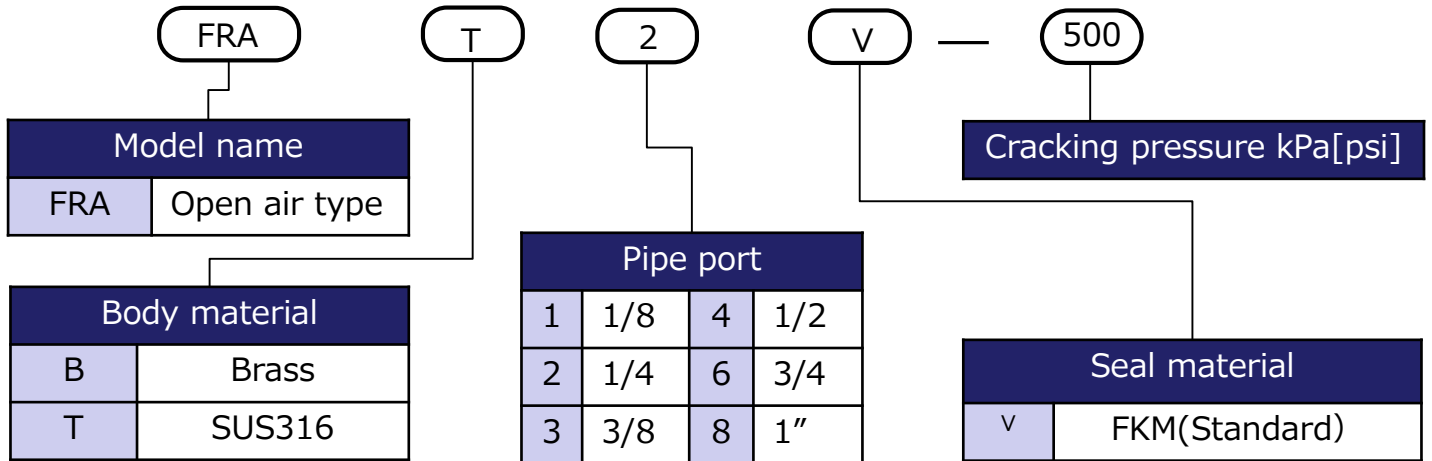


FUJIKURA COMPOSITES

Characteristic



Model designation



Caution
Please order setting pressure at kPa.

Example) In case of 0.05MPa(50kPa) < 50 >
In case of 1MPa(1000kPa) < 1000 >

※Please inquire about other materials.

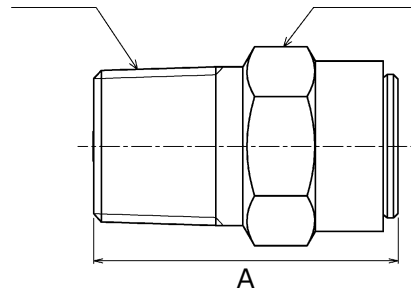
※When operating temperature ranges are more than 100°C[212°F] or less or -20°C[-4°F], please contact us.



FUJIKURA COMPOSITES

■ Size

Pipe port



HEX (Opposite side)

<mm> [inch]

Pipe port(R)	A	HEX (Opposite side)
1/8	<25.5±2.0> [1.00±0.08]	<13.0> [0.51]
1/4	<31.0±2.0> [1.22±0.08]	<17.0> [0.67]
3/8	<33.0±2.0> [1.30±0.08]	<19.0> [0.75]
1/2	<44.8±3.0> [1.76±0.12]	<26.0> [1.02]
3/4	<52.4±3.0> [2.06±0.12]	<29.0> [1.14]
1"	<72.8±3.0> [2.87±0.12]	<38.0> [1.50]



FUJIKURA COMPOSITES

Contact us

Control Equipment

Head office: TOC Ariake East Tower 10F, 3-5-7 Ariake,
Koto-ku, Tokyo, Japan 135-0063

TEL +81-3-3527-8573

E-mail: seigyo.toiawase.en@fc.fujikura.co.jp

URL: <http://www.fujikura-control.com/>