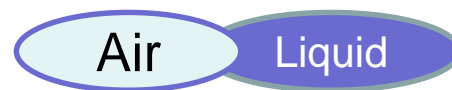




## "FC8" series



FC8 series adopted resin POM for the body. Corresponds to compressed air and liquid.

### ■ Features

- "FC8 series " is lightweight because resin.
- In addition to tap water, various liquids can be used.
- Piping installation posture is free.
- Low cracking specification.



### ■ Applications

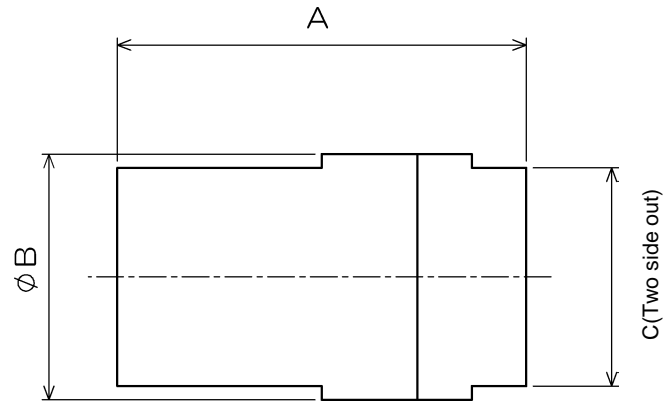
- Machine Tools : Milling machine, NC lathe, laser processing machine etc.
- Industrial furnace : General industrial furnace, heating furnace, vacuum furnace, etc.
- Medical : Endoscope washing device, oxygen concentrator, anesthesia machine etc.
- Analysis equipment: Measurement equipment, component gas analysis, gas analyzer etc.
- Battery : Household fuel cell, secondary battery, gas engine etc.
- Water (liquid) treatment: Pure water production, pure water recycling.
- Gas generator related: Compressor, compact pressure vessel, various gas generator etc.
- Others: Oxygen capsule, gasoline measuring instrument, forklift etc.

### ■ Specification

Working fluid	Water / Air	Pipe port	Rc1/4~Rc1/2
Operating pressure MPa[psi]	0 ~ 0.5 [0 ~ 72.52]	Body material	POM
Pressure Resistance MPa[psi]	0.8 [116.03]	Seal material	FKM(Standard)
Cracking pressure kPa[psi]	3 [0.44]	Operating temperature range °C[°F]	5~55 [41~131]
Comment	<ul style="list-style-type: none"> <li>■ Because body is made by resin, please be careful about the leak from a screw, plumbing stress at the time of the plumbing construction.</li> <li>■ As for temperature is more than 45°C [113°F] , continuations more than one hour are unusable.</li> <li>■ If you use other fluids, please contact us.</li> <li>■ If you use other material (EPDM, NBR, Perfluor, etc), please contact us.</li> </ul>		



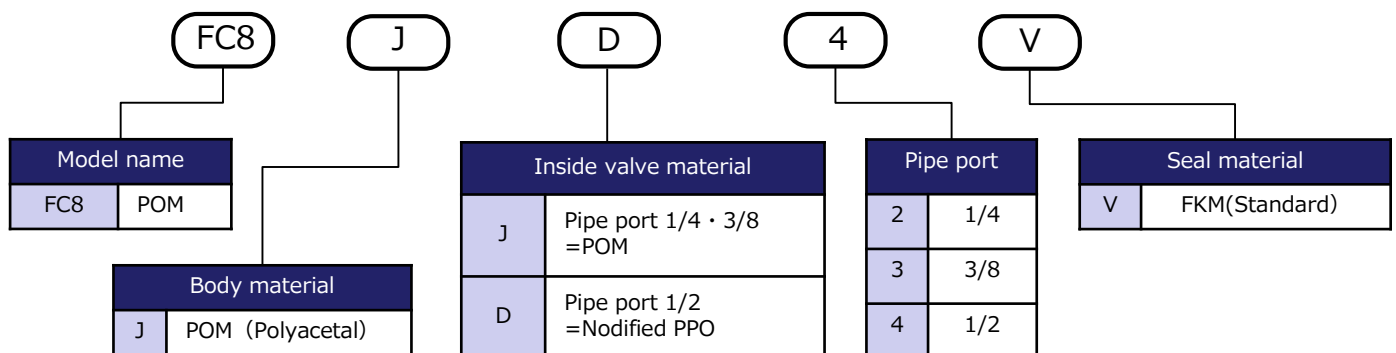
## ■ Size



<mm> [inch]

Pipe port(R)	A	B	C
1 / 4	<55> [2.17]	<32> [1.26]	<28> [1.10]
3/8	<57> [2.24]	<34> [1.34]	<30> [1.18]
1/2	<60> [2.36]	<36> [1.42]	<32> [1.26]

## ■ Model designation

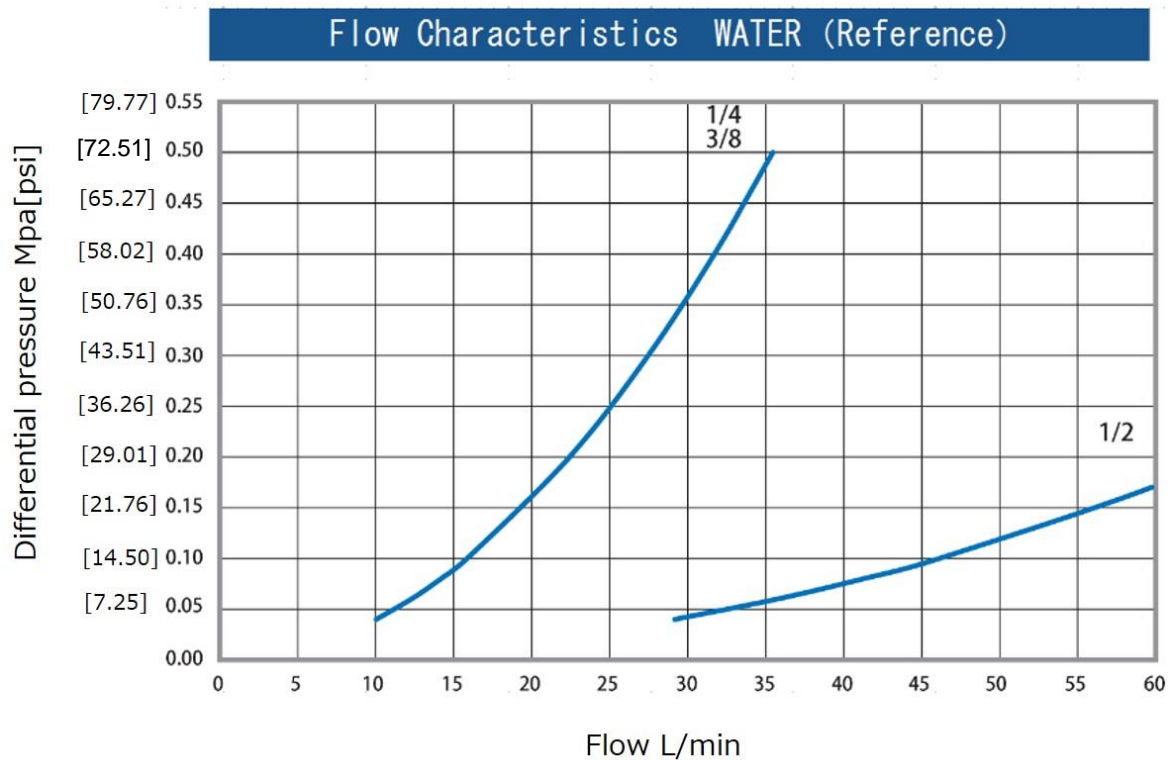
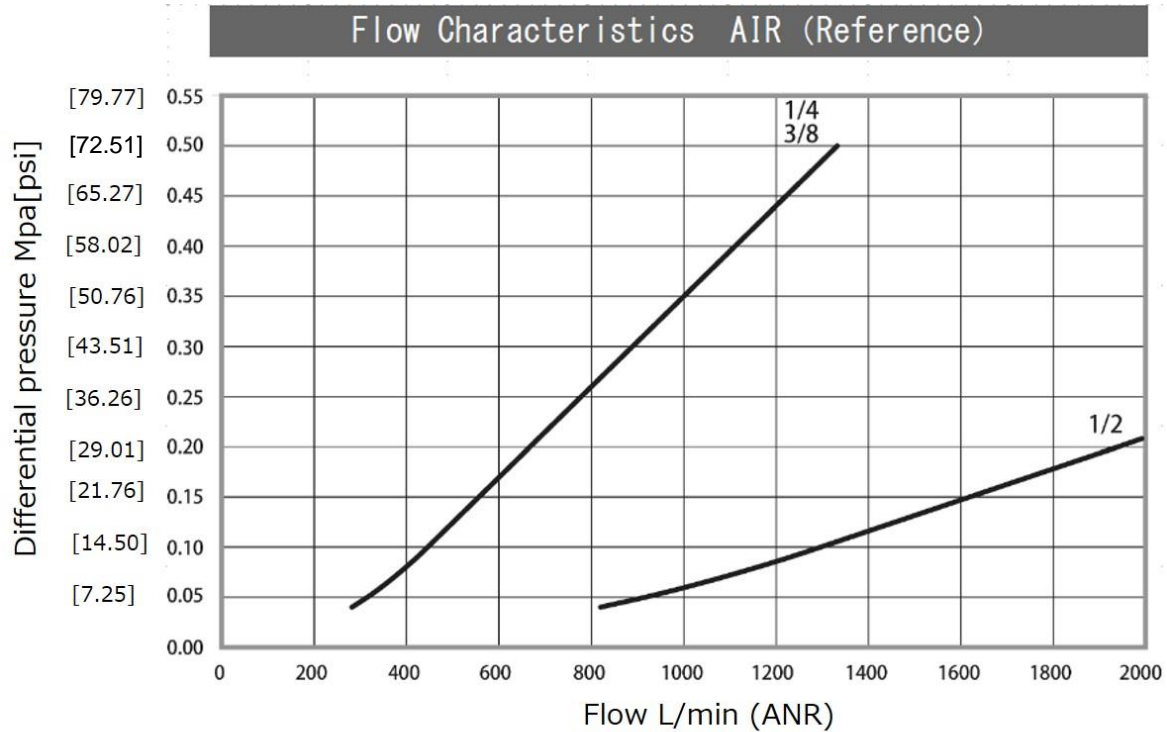


\* For other materials, please contact us. (EPDM, NBR, Perfluor, etc.)



# FUJIKURA COMPOSITES

## ■ Characteristic



FUJIKURA COMPOSITES

### Contact us

Control Equipment

Head office: TOC Ariake East Tower 10F, 3-5-7 Ariake,  
Koto-ku, Tokyo, Japan 135-0063

TEL +81-3-3527-8573

E-mail: [seigyotoiawase.en@fc.fujikura.co.jp](mailto:seigyotoiawase.en@fc.fujikura.co.jp)

URL: <https://www.fujikura-control.com/>